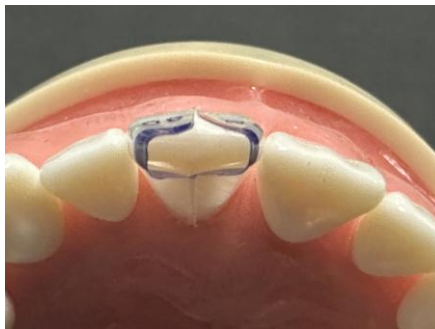


Fractured Central Incisor Workshop: New TSS & Clearfil™ Majesty ES-2

Course Overview:

This 1 hour 30 minute workshop explores the predictable management of a fractured central incisor using the new TSS matrix system in combination with injection moulding techniques utilising Clearfil™ Majesty ES-2. The approach is designed to deliver efficient, aesthetic, and durable composite restorations.

Participants will gain an understanding of compressive preparation design for fractured teeth and develop confidence in the selection and placement of TSS matrices on soft-tissue dentoforms. The session includes hands-on experience with injection moulding using Kuraray materials.



The course incorporates the use of HeatSync composite warmers, Komet burs, TSS matrices, and heated injection-moulded Clearfil™ Majesty composite materials.

kuraray

Noritake



We're grateful for the support of Zumax and Orasoptic, giving delegates a unique opportunity to work with high-quality burs, microscopes and loupes during the workshops.





You will learn:

- Compressive preparation design for a fractured central incisor
- Selection and placement protocols for the Bioclear TSS matrix system
- Injection moulding techniques using Clearfil™ Majesty composite materials
- Methods to reduce finishing and polishing time
- Troubleshooting common challenges in anterior composite restorations
- Hands-on access to Komet burs Zamax microscopes and Orascoptic loupes

If you have any questions regarding the workshop, please contact:

support@bioclearmatrix.co.uk

Kind regards,

Dr Claire Burgess

Bioclear Matrix UK Ltd